



Empowering excellence: Connect360 project services for seamless solutions.

With a dedicated focus on service excellence and a relentless pursuit of simplicity, Connect360 project services ensure seamless success in every delivery. Our diverse range of professional services is tailored to meet the unique challenges and requirements of our clients. We prioritise building trust at every step to ensure your journey is effortless. With our expertise and industry knowledge, we provide strategic guidance, innovative design solutions, and robust engineering support to design and deploy solutions that drive real success.

Our professional services are accessible via three distinct methodologies:

1 Waterfall methodology

Discover predictability and precision.

Tailored for clients requiring a fixed outcome, precision and reliability, our service excels. Its structured approach ensures that every stage is well-documented, facilitating easy communication and comprehensive understanding.

2 Agile methodology

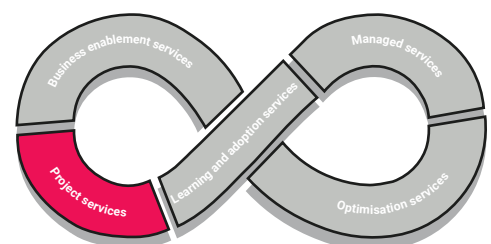
Embrace flexibility and agility.

Renowned for its flexibility, allowing continuous refinement and adjustments throughout the project lifecycle. We place a strong emphasis on client feedback and iterative delivery, ensuring that the end product precisely meets the needs of your business.

3 Time and materials

Optimise with flexible resource management.

Allowing for flexible adjustment of project scope and direction as it evolves, perfectly aligning with your dynamic business needs. We provide a wide range of professional services to support your project requirements.



Detailed design.

Turn your vision into a viable blueprint. Our detailed design services bridge the gap between conceptual planning and practical implementation. We focus on creating designs that are not only innovative but also fully aligned with your business objectives, ensuring a seamless transition into development and deployment.

Engineering and development.

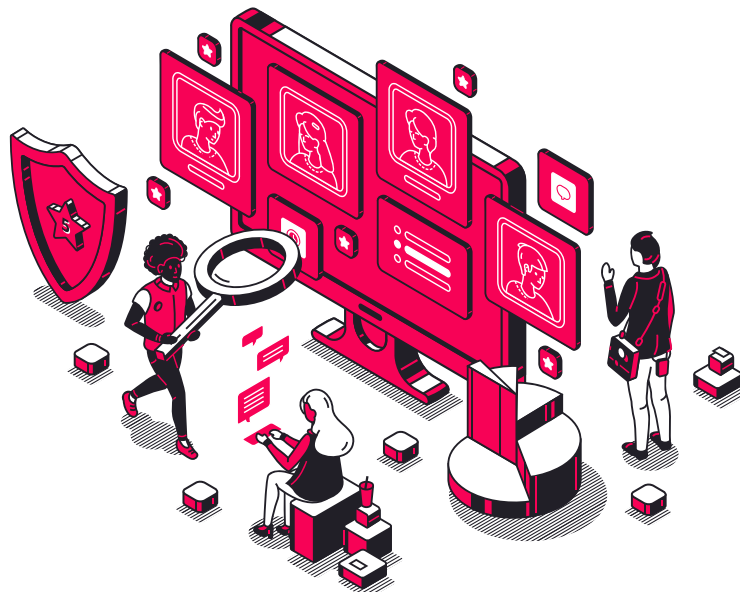
Build with confidence. Our engineering and development teams are at the forefront of technology, utilising the latest tools and methodologies to bring your designs to life. We ensure that every component of your project is built to the highest standards of quality and functionality, preparing you for a successful launch.

Testing.

Testing services play a vital role in ensuring project success for our clients. By rigorously testing solutions, we catch and fix issues before they disrupt operations, ensuring high-quality deliverables. This proactive approach boosts reliability and minimises the risk of costly errors.

Programme and project management.

Count on Connect's programme and project services for unparalleled project success. Our accredited and experienced teams are here to handle every aspect, ensuring seamless delivery with a focus on value, risk management, and ease. With us, you can trust that 'we got this', leaving you free to focus on your business goals.



So why choose Connect360 project services?

Unmatched value.

With Connect360 project services, it's more than just a service – it's a comprehensive solution. Our teams are committed to delivering solutions that not only meet but exceed your expectations, ensuring maximum return on your investment.

Our ethos of partnership and collaboration.

Beyond services, we offer a collaborative journey where we stand by your side, listen to your needs, and work together to achieve project success for your business. Experience the difference of a true partnership ethos with Connect.

Trust and reliability.

We deeply value the trust that forms the cornerstone of every successful partnership. It's our commitment to nurturing and upholding this trust with each and every one of our clients. You can rely on us to deliver on our promises, meet deadlines, and exceed expectations – every time.

Extensive experience.

With years of experience in the industry, our teams bring a wealth of knowledge and expertise to every engagement. We've seen it all and done it all, and we leverage our experience to tackle even the most complex challenges with confidence.

Seamless execution.

We understand that execution is key to project success. That's why we strive for excellence in every aspect of our work, ensuring seamless execution from start to finish.

Trust Connect to deliver tailored solutions with precision and efficiency.



Connect with us.

Get in touch with Connect today to learn how we can help you deliver seamless success in every project.